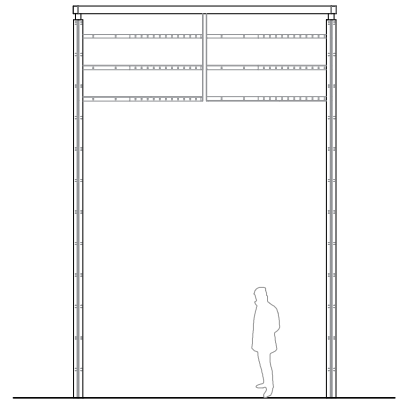
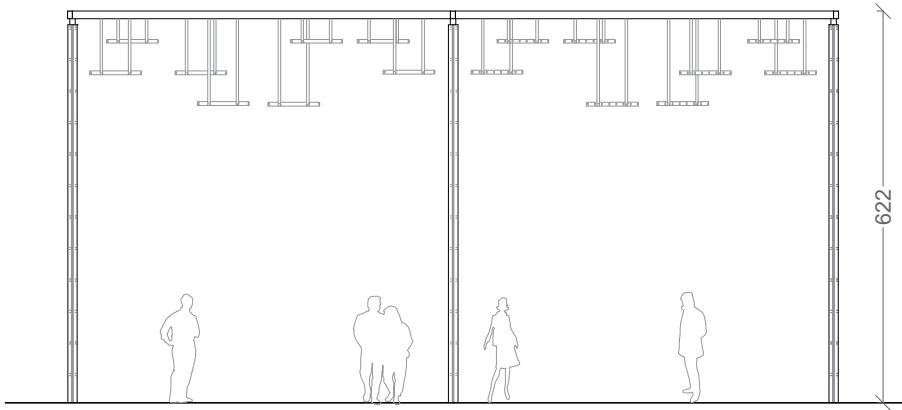
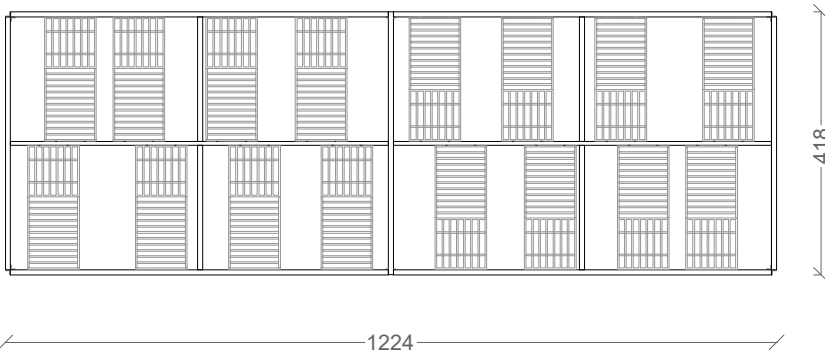


# Technical Specifications





Measurements in centimetres (cm)





The purity of the lines and joints of the MARTE Pergola are reinforced by the materials used (stainless steel and wood).

## Materials and finishes available

### A. Wood

-  Autoclave treated and protected red pine, FSC-certified
-  Treated and protected tropical, FSC certified

### B. Structure

-  Rectangular hot-dip galvanised hollow sections, finished with epoxy resin primer.
-  Stainless steel cruciform pillars AISI316 , frosted finish

